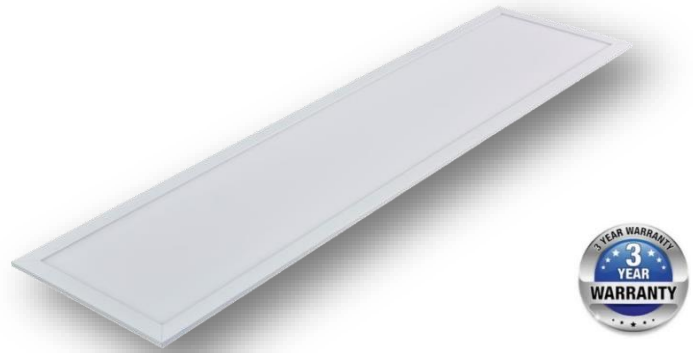


Model: ELG-40W-3WAY-PANEL-BL

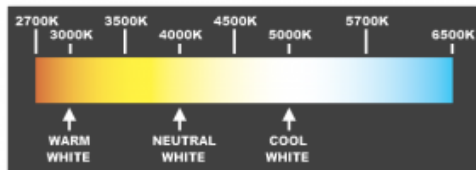
3 COLOUR SELECT

LED panel troffers are a complete fitting replacement for traditional fluorescent fittings, or perfect for new installations where it can be recessed, surface mounted or suspended. Our panel light is supplied together with LED Driver and Australian plug, ready to install.



Product Features:

- White Trim
- 120° Beam Angle
- >81-101Lm/w efficacy, CRI >80 Ra
- Aluminium with PS lens
- Optional Triac or Dali/Push Dim



Accessories:

Surface Mount Frame:



Plaster Recess Frame:



Suspension wire kit:



SPECIFICATION			
Panel Size	Rectangle 1195x295mm (x30mm)		
Model	ELG-40W-3WAY-PANEL-BL		
Colour Temperature	3000k	4000k	5000k
Lumen (Lm)	3,010	3,412	3,201
Power Consumption	36.8w	33.7w	36.2w
Light Source	Back light SMD LED's		
CRI	>80 Ra		
Power Requirement	AC 200~240V		
Lifespan	> 40,000 hrs		
Operation Temperature	-25°C~+45°C		
Weight	3.3kg		
Mounting Method	T-Bar Ceiling, Plaster Recess, Surface Mount, Pendant Wire		
Protection Rating	IP20		
Warranty	3 Years		

