



ELEVAGE
LIGHTING GROUP

Consult. Supply. *Illuminate.*

**LED Flood
& Canopy
Lighting**

elevagegroup.com.au

TRIC FLOOD SERIES

Product Features

- Black frame
- Aluminium Die Cast Housing
- Tempered Glass Face
- IK08 Impact Rating
- Beam Angle 120°
- Voltage Range AC85-265V
- CRI >80
- Osram/Philips 3030 LED Chips
- Meanwell Driver
- Dimming Options Available
- >50,000 hrs lamp life
- Power factor >0.95
- IP65 rated



TRIC FLB RGBCW SERIES

Product Features

- Black frame
- Bluetooth Dimming and Control
- 50/60Hz
- CRI>80
- Voltage Range AC100-277V
- Beam angle 120°
- Power factor >0.95
- IP66 rated
- Die Cast Aluminium
- Total Harmonic Distortion <20%
- Colour Wave Lengths – 3000k, 6000k
- R:620nm, G:520nm, B:460nm



The LED BLE app works with both android and IOS, giving you full functionality of one fitting or a group.



ASYMMETRIC FLOOD SERIES

Product Features

- Only consumes 600w of power*
- Quality Meanwell Driver*
- 20kV Surge Protector*
- Forward throw indirect design*
- Reduced glare with cut-off*
- Marine grade aluminium structure*
- Corrosion resistant polyester powder coat finish*
- IP65 weatherproof housing*



JUPITER FLOOD SERIES

Product Features

Colour Temperatures: 5000K, 4000K,
3000k, Amber by special order

CRI: ≥ 80

Beam Angle: 150°x75° Asymmetric wide

Other beam angles: 30° / 60° / 90° by
special order.

Lifetime (F50): 50,000 hrs

Lumen maintenance (L90): 50,000hrs

Min/Max operating Temp: -20 °C ~ +50 °C



Electrical Parameters

Power: 50W - 200W

Input Voltage: 220-277V 50/60Hz

Power Factor: 0.95

IP Rating: IP65, Impact Rating: IK08

Certificates: CE, ROHS, SAA

Standards: EN

55015:2006+A1:2007+A2:2009

EN 61000-3 2:2006+A1:2009+A2:2009

EN 61000-3-3:2008/EN 61547:2009



TRIC SURFACE CANOPY SERIES

Product Features

PC Lens Shatterproof IK10
DLC 4.1
Excellent waterproof performance
Photocell, Motion sensor, and Dimmable options
Die-casting Aluminium housing
Corrosion resistant
Integrate housing and heat sink
1.5G vibration standard
UV resistant
IP65
Temperature rated at -40°C to 50°C

Electrical Parameters

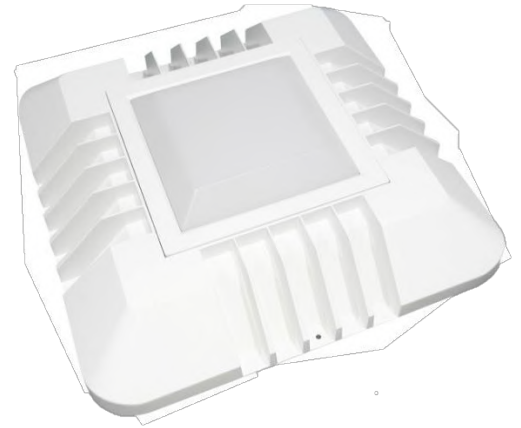
100-277 VAC 50/60Hz
Power Factor $>90\%$ and THD $<20\%$
Surge Protection
6kV/3kA "Basic" surge protection, standard
10kV/5kA "Enhanced" surge protection optional
Dimming/Occupancy
Wired 1-10V continuous dimming
Motion sensor Inventronics Driver



SURFACE MOUNT LED CANOPY LIGHT

Product Features

- Aluminium die cast housing*
- Opal polycarbonate face*
- Long operating life and performance*
- 120° Beam Angle*
- IP65 Waterproof housing*
- Easy connect junction box on rear*
- Replaceable Meanwell IP66 driver*
- CRI > 80*



Consult. Supply. *Illuminate.*

Elevage Lighting Group
6/8 Murphy St, O'Connor
Perth WA, 6163

sales@elevagegroup.com.au