



ELEVAGE
LIGHTING GROUP

Consult. Supply. *Illuminate.*

Linear

elevagegroup.com.au

TRIC LINEAR SERIES

Product Features

Black, white and silver aluminium frames available

Trailing and leading edge dimming

DALI

Emergency 33% Light output for 90 minutes

Available in 600mm to 2400mm lengths

Electrical Parameters

High performance optics and uniform light distribution

UGR<19

3 Step MacAdam Ellipse

Luminaire output efficacy up to 100LM Per watt

Standard CRI 90

CCT 3,000k, 4,000k, 5,000k, and 6,000k

Standard Beam Angle 110°

50,000 hours lamp life

Input voltage AC200-240V – 50/60HZ

Flicker Free Driver

Output voltage DC30-42V

PF>0.92 at full load

Edison chip LED

Ambient operating temperature -25~45°C



TRIC LINEAR SERIES



Ratings

IP20

IK08

CE – EMC

CE-LVD

SAA

C-tick

TUV

RoHS



TRIC LINEAR RECESSED SERIES

Product Features

- Independent Flicker Free Driver
- Recessed Fitting
- Beam angle 100°
- CRI >80

Electrical Parameters

- Voltage AC 200-240V
- UGR<19
- 3 Step MacAdam Ellipse
- >50,000 hrs lamp life
- Power factor >0.90
- IP20



TRIC LINEAR RING SERIES

Product Features

Beam angle 120°

Voltage AC 200-240V

UGR<19

3 Step MacAdam Ellipse

>50,000 hrs lamp life

Power factor >0.90

IP20

CRI >90



TRIC LINEAR SHAPE SERIES

Product Features

Beam angle 120°

Voltage AC 200-277V

UGR<19

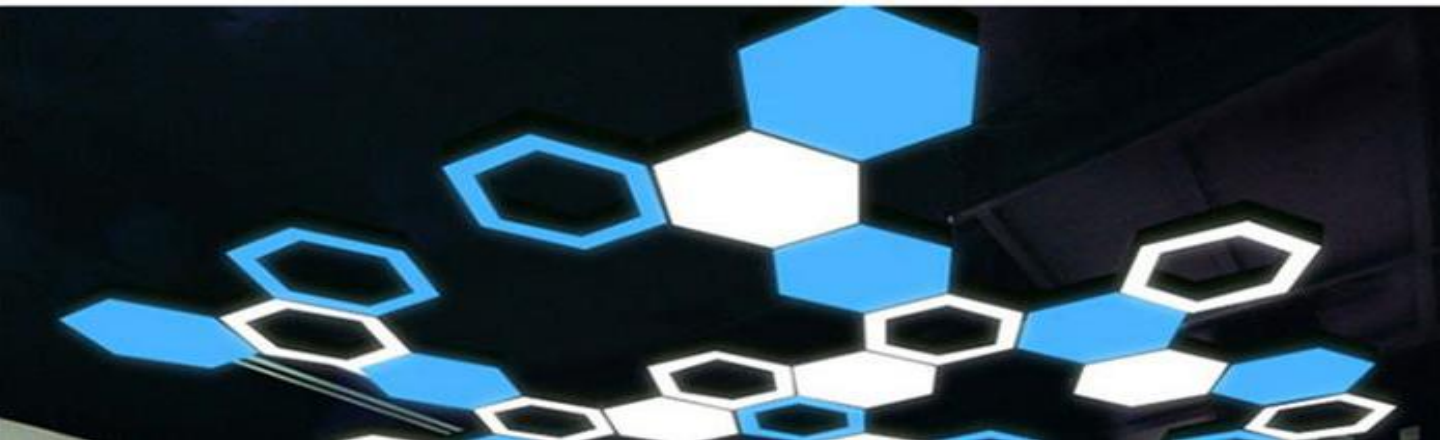
3 Step MacAdam Ellipse

>50,000 hrs lamp life

Power factor >0.90

IP44

CRI >90



TRIC LINEAR SIDE THROW SERIES



Product Features

Suspended or Surface Mount

Extrusion angle 45°

Beam angle 80°

Lifud Flicker Free Driver

Input Voltage AC 200-240V – 50/60HZ

Output Voltage DC27-38V

Dimming Available

>50,000 hrs lamp life

Power factor >0.90

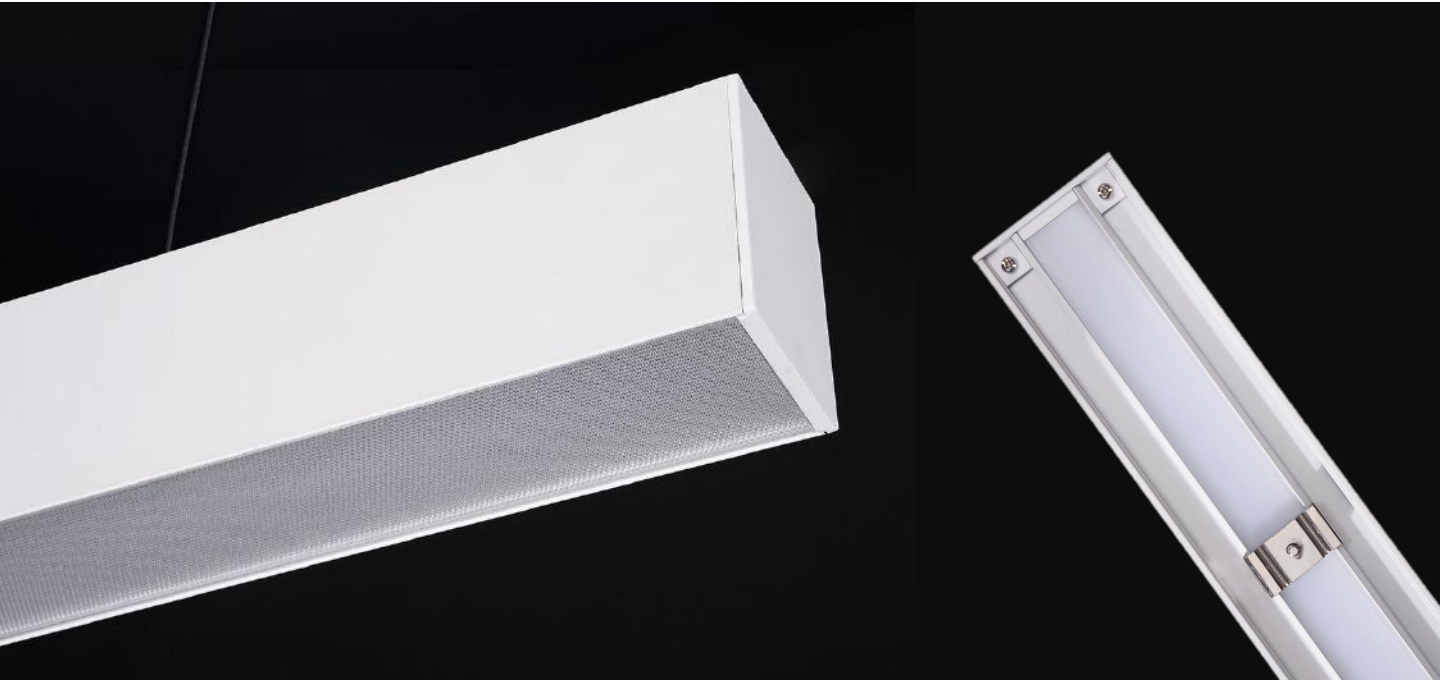
SDCM>3

IP20

CRI >90



TRIC LINEAR DUO SERIES



Product Features

Suspended Mounting

Beam angles 110°

Edison 2835 LED

3 Step MacAdam Ellipse

Voltage AC 100-277 V

>50,000 hrs lamp life

Power factor >0.90

IP20

CRI >90

Operating Temperature -25~+45°C

Dali option available



TRIC LINEAR SLIM SERIES



Product Features

- Suspended or Surface Mounting*
- Beam angles 110°*
- Boke LED External Driver*
- Edison 2835 LED*
- Voltage AC 100-277 V*
- >50,000 hrs lamp life*
- Power factor >0.90*
- IP20*
- CRI >90*
- 3 Step MacAdam Ellipse*
- Operating Temperature -25~+45°C*



Violento Linear Series

The Violento Linear Range is fitted with a dual diffuser system which assists in the extremely low UGR (Anti-Glare) this fitting is capable of achieving.

Product Features

- Boke Flicker Free Drivers
- CRI>90
- UGR<16
- Epistar Chips
- 3 Step MacAdam Ellipse
- Size (mm) 86 x 40
- Working Temperature -20 ~ 50°C
- IP20
- Black, White and Silver frames available
- Available in 900, 1200, & 1500mm lengths
- 5 year warranty

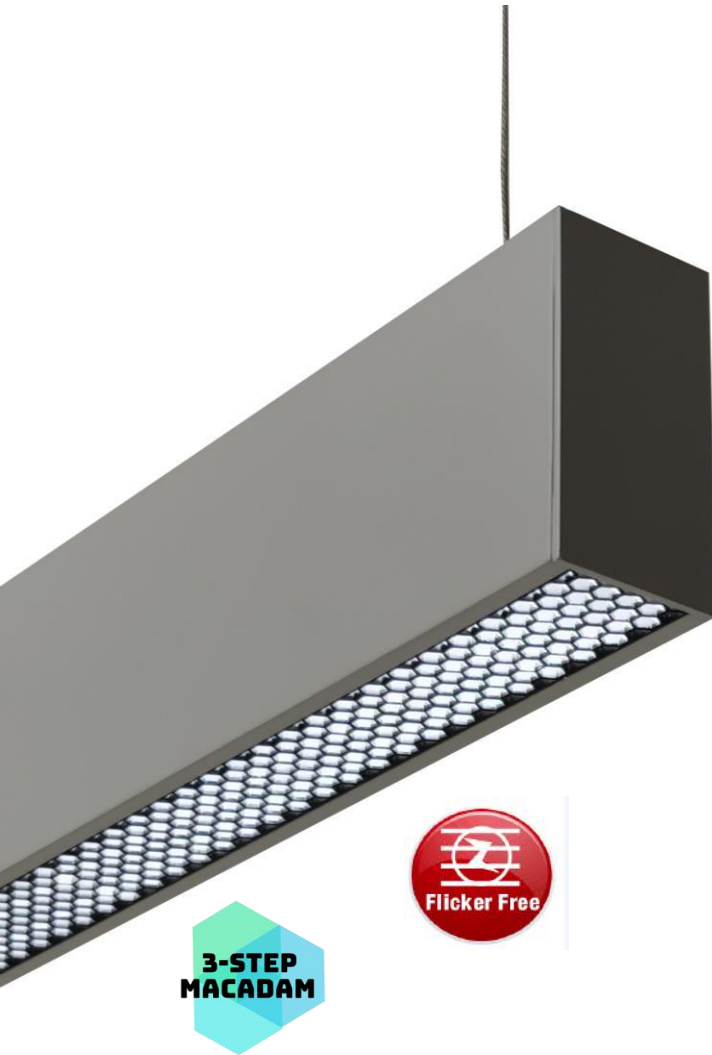


Its sleek design is further complimented by its honeycomb style diffuser and slim finish being only 40mm wide and 86mm high.



Violenti Linear Series

The Violenti Linear Range is fitted with a dual lighting source with two thirds of the total wattage focusing on the downlighting, and one third being used as up lighting to produce an ambient effect.



Product Features

Boke Flicker Free Drivers

CRI>90

UGR<16

Epistar Chips

3 Step MacAdam Ellipse

Size (mm) 86 x 40

Working Temperature -20 ~ 50°C

IP20

Black, White and Silver frames available

Available in 900, 1200, & 1500mm lengths

5 year warranty



Its sleek design is further complimented by its honeycomb style diffuser and slim finish being only 40mm wide and 86mm high.



Consult. Supply. *Illuminate.*

Elevage Lighting Group
6/8 Murphy St, O'Connor
Perth WA, 6163

sales@elevagegroup.com.au