

eLEDtric

# LINEAR Highbay Series



**ELEVAGE**  
LIGHTING GROUP

Consult. Supply. *Illuminate.*

[elevagegroup.com.au](http://elevagegroup.com.au)



# eLEDtric

## LINEAR Highbay Series

*The eLEDtric LINEAR Highbay Series features advanced heat sinking technology with improved electronics and comes in a range of optic and lumen outputs, giving our LINEAR Highbay unparalleled design, maximum energy efficiency and unrivalled optical and brightness control.*

*With a diverse range of uses from warehousing, industrial, flood and tunnel lighting this fitting can fulfil most requirements.*

*The housing componentry is constructed with corrosion resistant aluminium for superior durability. The LINEAR Highbay has a IK08 impact rating making it extremely robust and capable of handling the roughest of environments.*



**ELEVAGE**  
LIGHTING GROUP

Consult. Supply. *Illuminate.*

[elevagegroup.com.au](http://elevagegroup.com.au)



# eLEDtric

LINEAR Highbay Series

## Product Features

- *Die cast aluminium - Black*
- *0-10v & 1-10v dimming*
- *DALI Available*
- *Integrated daylight sensing and motion detecting functionality*
- *Replaceable driver unit and control gear*
- *Suspended or Surface Mount*



Consult. Supply. *Illuminate.*

[elevagegroup.com.au](http://elevagegroup.com.au)



**eLEDtric**  
LINEAR Highbay Series

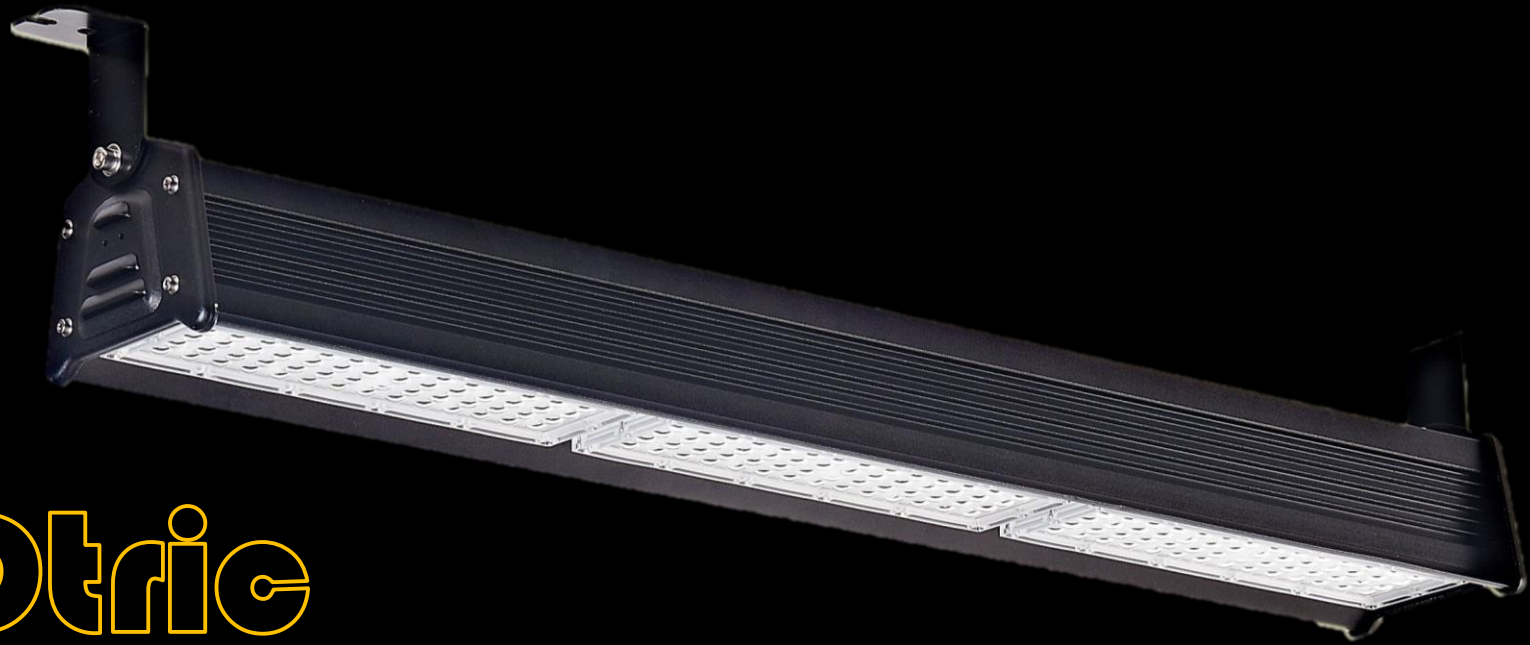
## Light Performance

- *Tempered glass and uniform light distribution*
- *Luminaire output efficacy 130LM per watt*
- *Standard CRI 70*
- *CCT 3,000k, 4,000k, 5,000k, 6,000k*
- *Beam Angles available 90, 30\*100, 65\*100, 70\*140°*
- *60,000 hours lamp life*



Consult. Supply. *Illuminate.*

[elevagegroup.com.au](http://elevagegroup.com.au)



eLEDtric

LINEAR Highbay Series

## Electrical

- *Input voltage AC100-277V*
- *PF>0.92 at full load, THD<10% at full load*
- *Luxeon LED Chip*
- *Ambient operating temperature -30 to 50°C*



**ELEVAGE**  
LIGHTING GROUP

Consult. Supply. *Illuminate.*

[elevagegroup.com.au](http://elevagegroup.com.au)



# Certificates

- *IP66*
- *IK08*
- *CE – EMC*
- *CE-LVD*
- *SAA*
- *ETL DLC*
- *DLC4.1 Listed*
- *RoHS*
- *TUV*
- *RCM*

## Warranty

- *5 years*

# tric LINEAR Highbay Series



| Product Code               | Power | Colour Temp |
|----------------------------|-------|-------------|
| tric HB LINEAR-100W3K      | 96w   | 3000k       |
| tric HB LINEAR-100W4K      | 96w   | 4000k       |
| tric HB LINEAR-100W5K      | 96w   | 5000k       |
| tric HB LINEAR-100W6K      | 96w   | 6000k       |
| tric HB LINEAR-100W3K.DALI | 96w   | 3000k       |
| tric HB LINEAR-100W4K.DALI | 96w   | 4000k       |
| tric HB LINEAR-100W5K.DALI | 96w   | 5000k       |
| tric HB LINEAR-100W6K.DALI | 96w   | 6000k       |
| tric HB LINEAR-100W3K.MDS  | 96w   | 3000k       |
| tric HB LINEAR-100W4K.MDS  | 96w   | 4000k       |
| tric HB LINEAR-100W5K.MDS  | 96w   | 5000k       |
| tric HB LINEAR-100W6K.MDS  | 96w   | 6000k       |

For required beam angle add one of the following to the end of the product code

- 90
- 30\*100
- 65\*100
- 70\*140

# tric LINEAR Highbay Series

| Product Code               | Power | Colour Temp |
|----------------------------|-------|-------------|
| tric HB LINEAR-150W3K      | 145w  | 3000k       |
| tric HB LINEAR-150W4K      | 145w  | 4000k       |
| tric HB LINEAR-150W5K      | 145w  | 5000k       |
| tric HB LINEAR-150W6K      | 145w  | 6000k       |
| tric HB LINEAR-150W3K.DALI | 145w  | 3000k       |
| tric HB LINEAR-150W4K.DALI | 145w  | 4000k       |
| tric HB LINEAR-150W5K.DALI | 145w  | 5000k       |
| tric HB LINEAR-150W6K.DALI | 145w  | 6000k       |
| tric HB LINEAR-150W3K.MDS  | 145w  | 3000k       |
| tric HB LINEAR-150W4K.MDS  | 145w  | 4000k       |
| tric HB LINEAR-150W5K.MDS  | 145w  | 5000k       |
| tric HB LINEAR-150W6K.MDS  | 145w  | 6000k       |

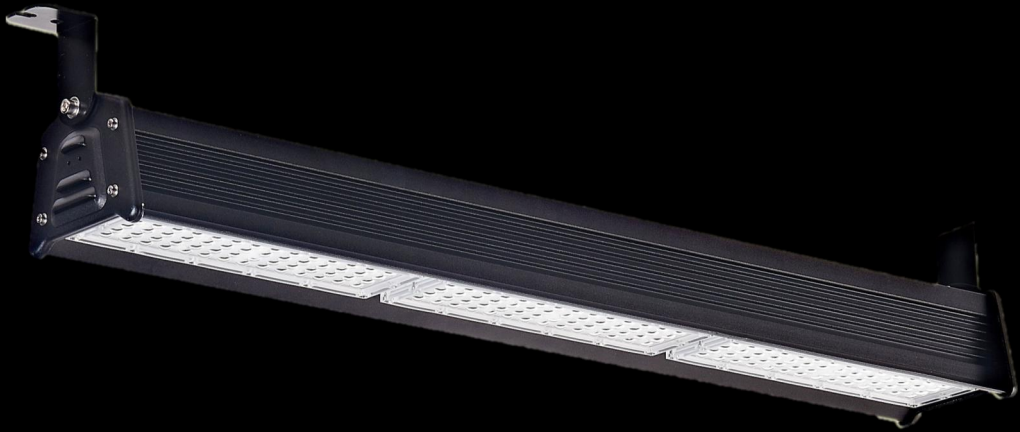
For required beam angle add one of the following to the end of the product code

- 90
- 30\*100
- 65\*100
- 70\*140





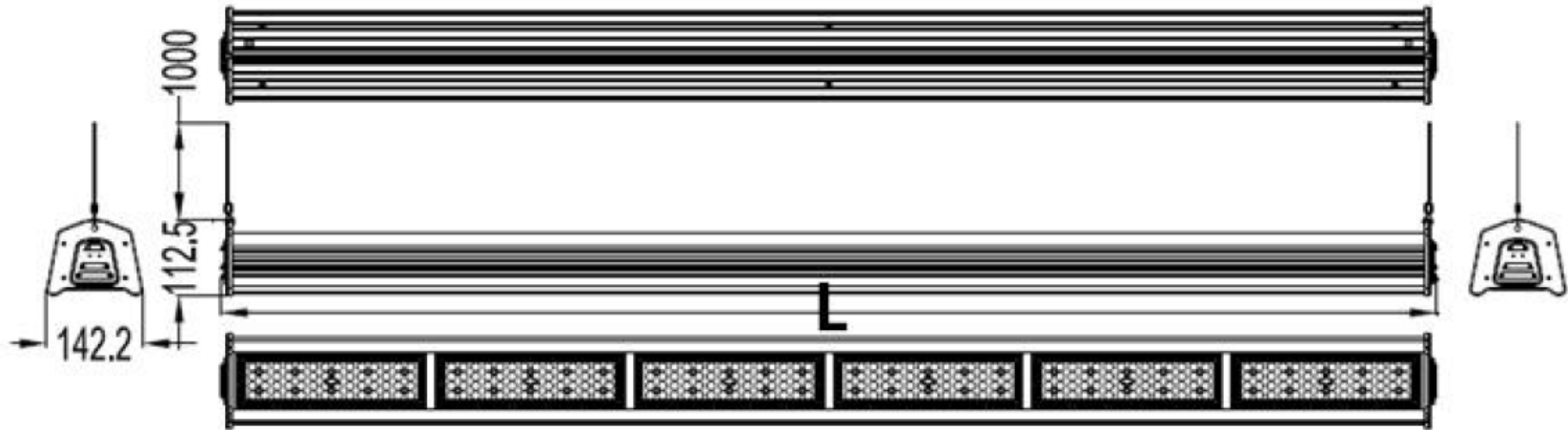
# tric LINEAR Highbay Series



| Product Code               | Power | Colour Temp |
|----------------------------|-------|-------------|
| tric HB LINEAR-200W3K      | 195w  | 3000k       |
| tric HB LINEAR-200W4K      | 195w  | 4000k       |
| tric HB LINEAR-200W5K      | 195w  | 5000k       |
| tric HB LINEAR-200W6K      | 195w  | 6000k       |
| tric HB LINEAR-200W3K.DALI | 195w  | 3000k       |
| tric HB LINEAR-200W4K.DALI | 195w  | 4000k       |
| tric HB LINEAR-200W5K.DALI | 195w  | 5000k       |
| tric HB LINEAR-200W6K.DALI | 195w  | 6000k       |
| tric HB LINEAR-200W3K.MDS  | 195w  | 3000k       |
| tric HB LINEAR-200W4K.MDS  | 195w  | 4000k       |
| tric HB LINEAR-200W5K.MDS  | 195w  | 5000k       |
| tric HB LINEAR-200W6K.MDS  | 195w  | 6000k       |

For required beam angle add one of the following to the end of the product code

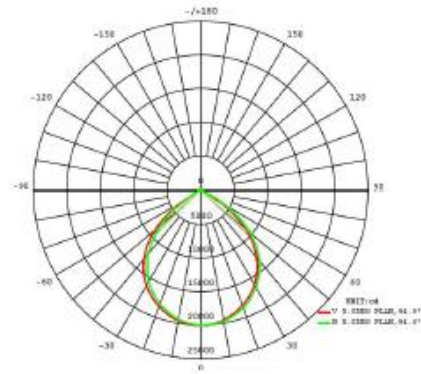
- 90
- 30\*100
- 65\*100
- 70\*140



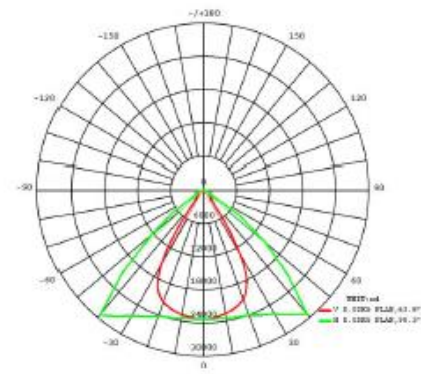
Unit: mm

| Watts | L    |
|-------|------|
| 58    | 329  |
| 96    | 624  |
| 146   | 919  |
| 195   | 1214 |
| 235   | 1509 |
| 300   | 1804 |

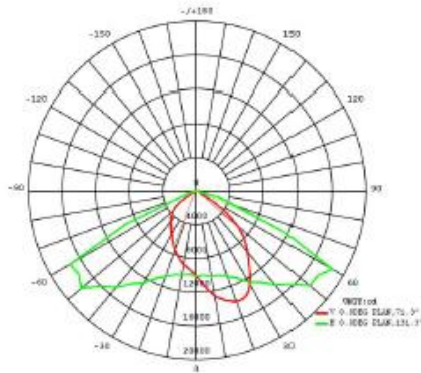
Photometric



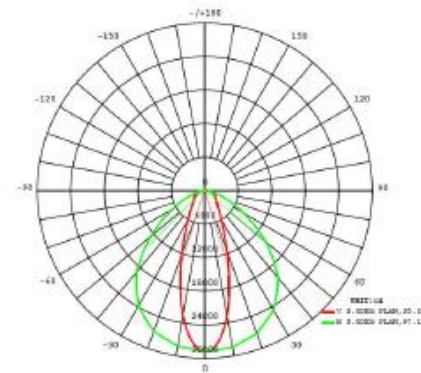
90°



65\*100°



70\*140°



30\*100°

